



Assistive Control Adaptor

AC20



Some of your patients can't fully operate
the TV, nurse call system, or lighting.

NOW THEY CAN.



“The device provides a first sense of hope for many individuals that despite having experienced a catastrophic injury or illness, they will be able to have some form of control over their future and have some capacity to meaningfully communicate needs.”

— Judith M. Burnfield, PhD, PT

Madonna Rehabilitation Hospitals

Director, Institute for Rehabilitation Science and Engineering

Director, Movement and Neurosciences Center

Clifton Chair in Physical Therapy and Movement Science



"After a devastating injury or illness, many patients lose their sense of independence and control. Activities once performed effortlessly, may only be possible with the assistance of others. This device helps individuals start to see the things they can control – it gives them back a sense of independence."

– Judith M. Burnfield

Assistive Control Adaptor

AC20

Many individuals with limited dexterity experience difficulty using traditional devices to call the nurse, control the television, or adjust lighting.

Working closely with a team at Madonna Rehabilitation Hospitals, and inspired by their First Hope technology, we designed the Assistive Control Adaptor. The Assistive Control Adaptor is a medical device per the FDA and meets all compliance requirements including UL 1069. It gives patients lacking hand control the ability to use sip-and-puff devices, button switches, or other types of sensors to call the nurse, control the TV, adjust lighting, and even open shades and drapes.*

Each device is configured individually for the patient and the type of switch that will be used, giving the patient the ability to navigate through menus and select options.

With the Assistive Control Adaptor, what previously required a visit from hospital staff can now be performed independently by the patient.

* The ability to control room features such as lights and shades is dependent on the existing capabilities of your nurse call system.

THE SYSTEM

The system has two main components – the Display Module and the Base Module.



DISPLAY MODULE

The Display Module mounts within view of the patient and provides access to nurse call, TV controls, and room controls*.

- ▶ The 4.3" LCD screen displays a menu that can be configured by your staff through which the patient selects various nurse call, entertainment, and room options
- ▶ Contains the speaker, headphone jack, and microphone used for communications with the nursing staff, as well as for entertainment audio
- ▶ Plugs into the Base Module, which supplies its power and connection to room devices and systems



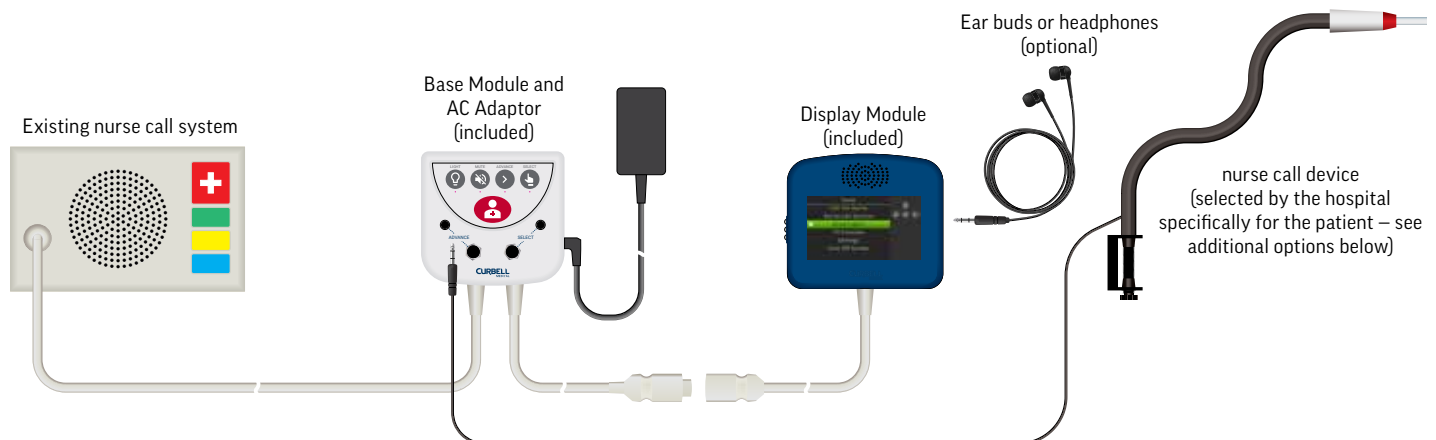
BASE MODULE

The Base Module mounts on the head wall and provides control signals to the nurse call system and other hospital and entertainment systems.

- ▶ Powered by the included power supply
- ▶ Breath-actuated devices or other specialty call cords are connected to the two 1/4" jacks and two 1/8" jacks
- ▶ Buttons allow the caregiver to operate the system

INSTALLATION

Installation is simple. Just mount the two modules and plug them in and it's ready to use.



A wide variety of input devices can be used, including these from Curbell.

BREATHCALL®



E-Z CALL™



PADCALL®



PRESSCALL®



MECHANICAL PAD



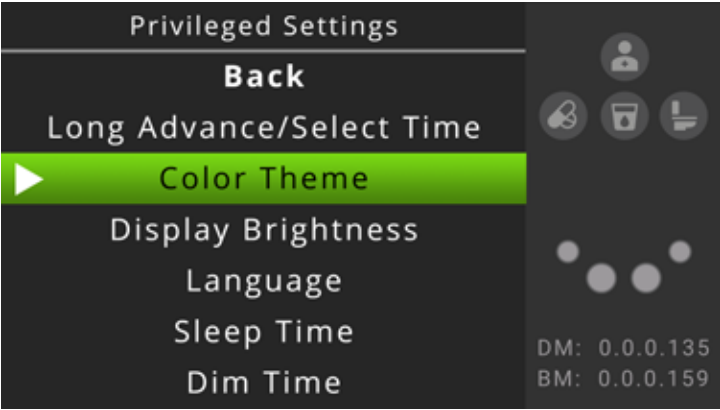
* The ability to control room features such as lights and shades is dependent on the existing capabilities of your nurse call system.

CONFIGURATION

The default settings will work with most patients, but there are numerous options that allow the device to be customized for each patient.



Settings like Auto Scroll Behavior set the device to operate in a way that's easiest for the patient, depending on the patient's abilities and what type of input device is being used.



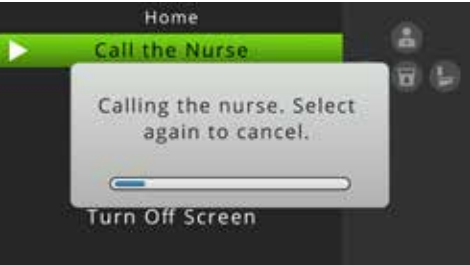
Settings like Color Theme, Display Brightness, and Language let you further customize the device for each patient

USE



Once the AC20 is configured for the patient, they can use their input device to navigate through menu selections.

Shown here are screens that the patient will see when calling the nurse, and controlling lights and the television.



For safety and security, the "Call the Nurse" option is present on every screen. Once the call is initiated, the patient has the option to cancel the call.



If the lights are connected to the nurse call system, the patient can turn lights on and off.



The system can be configured to allow entry of a specific channel, saving the patient from having to cycle through all available channels to get to the one they want.

MOUNTING



Both the Display and Base Modules can be mounted with various types of mounts. Both are equipped with AMPS mounting pattern holes.



DISPLAY MODULE MOUNTING

The Display Module can be mounted to the bed rail or pole using the display mount available from Curbell, or with a mount of the customer's choosing.

BASE MODULE MOUNTING

The Base Module can be mounted to the head wall using an adaptor from Curbell.

SPECIFICATIONS

Dimensions	Display Module: 5.25" x 4.5" x 1.25" (L x W x H)
	Base Module: 4.75" x 4.5" x 1.75" (L x W x H)
Mounting	Display Module: Bed rail or pole mount with AMPS mounting adaptor
	Base Module: Wall-mount or pole mount with AMPS mounting adaptor
Screen Dimensions	4.3" diagonal with Corning® Gorilla® Glass
Screen Resolution	1024 x 600
Backlight Type	LED
Speakers	1 Watt maximum (capped at 80dB @ 10cm +/- 5dB)
Headphone	1/8" stereo headphone socket on Display Module
Base Module Connectivity	Nurse Call System Interface cable (determined by nurse call system)
	Two 1/4" sockets for breath-activated or other call cord devices. Compatible to momentary, normally open, dry contact devices
	Two 1/8" sockets for breath-activated or other call cord devices. Compatible to momentary, normally open, dry contact devices
Base Module Power Supply	12V External (Included)