



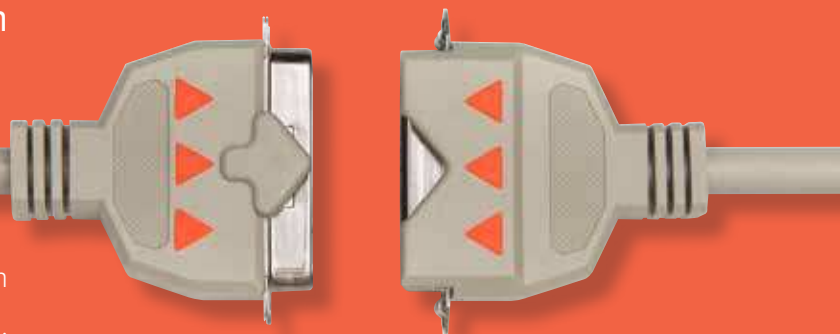
[This bed cable can help solve
three common problems]



[1] NON-STANDARDIZED BEDS AND NURSE CALL SYSTEMS

If your facility has multiple types of nurse call systems or beds, moving beds from room to room can be a challenge.

Curbell's breakaway cables give you a common connection in every room regardless of bed type or nurse call system. One section is permanently attached at the wall, and the other section is permanently attached to the bed. Use them throughout your facility, and you can freely move beds from room to room.



[2] RECEPTACLE AND CABLE DAMAGE

Is this a common sight after a bed gets moved? It doesn't need to be.

Aside from being a costly repair, a damaged wall receptacle or patient station can put a room out of service for days.

By using a breakaway cable from Curbell, you minimize the chance of this type of damage happening. If the bed is moved without disconnecting the cable, the unique two-piece design safely breaks apart at a point away from the wall, reducing cable replacement and receptacle repair costs, and most importantly, minimizing patient risk.



Plugs, pins, and wall receptacles incur damage when staff members forget to unplug the bed cable before moving the bed, or plug it in incorrectly.



The Centronics connectors on the Curbell breakaway cable have no pins to break.

[3] UNUSED BED FEATURES

Are the advanced features of your beds going unused because it's too much trouble to plug them in?

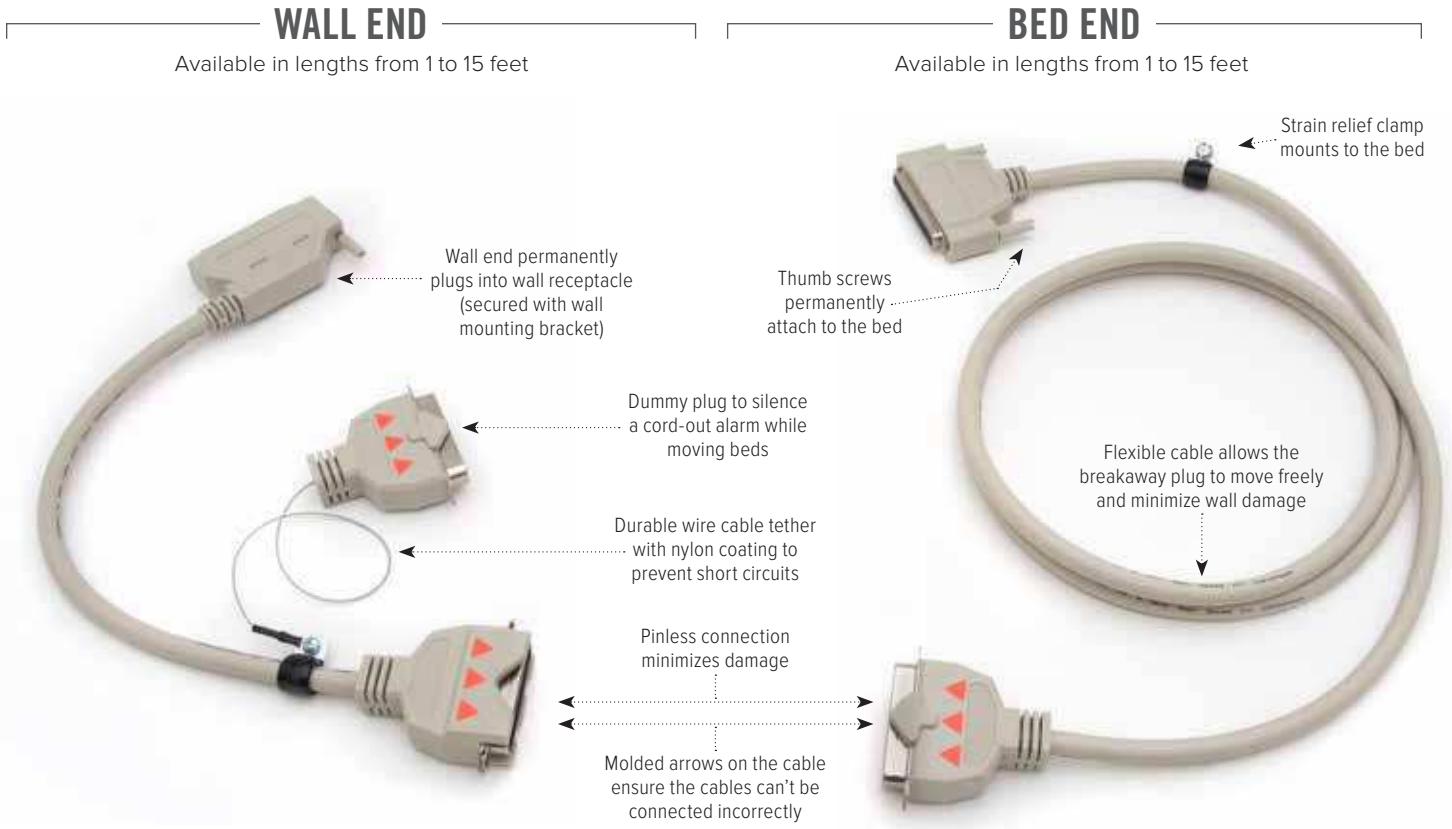
With a bed communication cable from Curbell Medical, a bed comes to life. It becomes a communication center, linking the patient to nurse call systems, televisions, and other room technologies — even delivering potentially life-saving data.

Using a breakaway cable lets you use all the features of the bed while having a simple and quick way to disconnect the bed when it needs to be moved.



37-PIN BREAKAWAY CABLES

- ▶ For use with Hill-Rom®, Stryker®, Carroll® (CHG®), Linet®, and ArjoHuntleigh® beds
- ▶ Available for most common nurse call systems
- ▶ Various lengths are available
- ▶ Each half of the breakaway cable can be purchased separately
- ▶ One year warranty



Part numbers for most common standard 37-pin connections are listed below.
Wall and bed half cables are also available separately in 1, 2, 4, 6, 8, 10, 12, and 15 foot lengths.

WALL END	LENGTH	BED END	LENGTH	PART NUMBER	PRICE	
37-Pin male, straight inline	1ft.	37-Pin female, Hill-Rom	6 ft.	BCC-3002-A01-A06-001	\$61.75	
37-Pin male, 90° angle				BCC-3003-A01-A06-001	\$61.75	
37-Pin male, straight inline	6 ft.		37-Pin male, Stryker	1ft.	BCC-3002-A06-A01-001	\$61.75
37-Pin male, 90° angle					BCC-3003-A06-A01-001	\$61.75
37-Pin male, straight inline	1ft.	6 ft.		BCC-3002-A01-E06-001	\$61.75	
37-Pin male, 90° angle				BCC-3003-A01-E06-001	\$61.75	
37-Pin male, straight inline	6 ft.	1ft.		BCC-3002-A06-E01-001	\$61.75	
37-Pin male, 90° angle				BCC-3003-A06-E01-001	\$61.75	

BED-TO-NURSE CALL BREAKAWAY CABLES

Curbell offers Breakaway Cables that connect directly to most nurse call systems, assuring that you're getting the maximum functionality out of your beds and nurse call system. They offer all the same features as our 37-Pin breakaway cables but with the appropriate plug ends to connect to these nurse call systems:

MANUFACTURER	SYSTEM	MANUFACTURER	SYSTEM
Ascom®/GE®	Ascom®/GE® Telligence™	Intercall	Legend II, Equinox II, Spectrum II, Ultra 6000, 6900, 9000
Austco®	MediCom, Tacera	Jeron®	Pro-Alert™ 640, Provider® 680, Spectrum® Pro IR
Critical Alert®/Intego®/Wescom	SPS101, System 200, 1000/3000	Rauland	Responder III+, IV, Responder 4000
Dukane	ProCare 2000®, 4000, 6000, System 2070	SimplexGrinnell®	EZ Care™
Executone	Lifesaver	TekTone®	Tek-CARE™ NC300 II, Tek-CARE 400
Fisher Berkeley	HP Series, MMC Series	West-Com	1000, 8000, Endeavor, Mark II, Odyssey, Odyssey Plus, Novus®
Hill-Rom®	COMLinx®, COMposer®, NaviCare® DB37, Headwall	Zettler	Sentinel 400®, Sentinel 500®

SPECIALTY BED-TO-NURSE CALL BREAKAWAY CABLES



For Ascom/GE Telligence® Patient Stations

Our breakaway cable for GE Telligence systems use extra long screws provide a secure fit at the patient station.



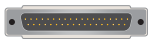
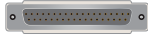





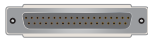
For Rauland® Patient Stations

The 800/102 Breakaway Cable allows the wall half of the breakaway cable to be plugged directly into Rauland patient stations with an 8-pin DIN for regular nurse call and a 1/4" auxiliary port (for the bed exit alarm).



For Patient Stations with 1/4" jacks

The 1/4" Breakaway Cable allows for Bed Exit and/or Nurse Call-only applications. It's a simple and reliable solution when you don't have the need or ability to use a Centronics Breakaway Cable. Call your Curbell Representative for additional plug styles.

WALL END	LENGTH	BED END	LENGTH	PART NUMBER	PRICE
 37-pin for GE Telligence (3701 plug style)	1 ft.	 Hill-Rom	6 ft.	BCC-3051-A01-A06-000	\$61.75
	1 ft.	 Stryker	6 ft.	BCC-3051-A01-E06-000	\$61.75
 8-pin DIN (800 plug style) and 1/4" (102 plug style)	1 ft.	 Hill-Rom	6 ft.	BCC-3070-B01-A06-001	\$77.20
	1 ft.	 Stryker	6 ft.	BCC-3070-B01-E06-001	\$77.20
 1/4" (102 plug style)	6"	 Hill-Rom	8 ft.	BCC-0000-002-A00-8	\$44.95

NOTE: Call for complete breakaway cable part numbers. Part numbers shown above are based on standard wiring and may not work for your specific requirements. Wall End and Bed End half cables are also available. Call your Curbell sales representative for information about cables for other nurse call systems and custom lengths

BREAKAWAY CABLE LOCKING SOLUTIONS

For a cable to separate at the breakaway point, it needs to be secured at both the bed end and the wall end. Curbell offers several options to secure the cable to different nurse call receptacles or Bed Interface Units.

37-Pin Wall Plates and Brackets

1



In-line Cable Wall Plate/Bracket

Allows you to secure in-line breakaway cables.

WPA-0719: \$29.95

2



90° Cable Wall Plate/Bracket

Allows you to secure 90° breakaway cables.

WPA-0713: \$29.95

3



Bracketless Wall Plate

Allows you to secure the breakaway cable using the bed cable mounting screws.

WPA-0608: \$11.00

4



Dual 90° Locking Bracket

Allows you to secure two 90° breakaway cables to an existing dual 37-pin wall plate.

BRK-1007-001: \$6.43

Wall Plate Mounting

Our breakaway cable wall plates can be connected without rewiring. Just remove the existing wall plate, then connect your existing female 37-pin receptacle to the male 37-pin connector on the back of the breakaway cable wall plate.



Hill-Rom Audio Station Bed Connector (ASBC) Brackets

5



In-line ASBC Cable Bracket

For securing in-line cables to Hill-Rom Bed ASBC Units.

HDW-3007-001: \$7.95

6



90° ASBC Cable Bracket

For securing 90° cables to Hill-Rom Bed ASBC Units.

HDW-3006-001: \$7.95

Hill-Rom® Bed Interface Unit Brackets

7



BIU Cable Bracket

For securing inline and 90° cables to Hill-Rom Bed Interface Units.

HDW-3000-001: \$4.07

8



BIU 90° Cable Bracket

For securing 90° cables to Hill-Rom Bed Interface Units.

HDW-3005-001: \$7.16

Additional Parts

9



Wall Mount



Bed Mount

Wall or Bed Cable Bracket

For securing cables to beds or non-37-pin wall plates.

HW-150: \$1.50

10



Ascorm/GE® Telligence Screw

Longer screws for securing breakaway cables to Telligence patient stations.

HW-814: \$.75 each (two required per connection)

		1	2	3	4	5	6	7	8	9	10
		Inline Standard 37 Pin	90° Standard 37 Pin	Bracketless Wall Plate	Dual 37 pin Bracket	ASBC Inline Bracket	ASBC 90° Bracket	BIU Cable Bracket	BIU 90° Cable Bracket	Wall or Bed Cable Bracket	Ascorm/GE Telligence Screw
Nurse Call System	37 Pin Connector Location										
Executone	wall plate	●	●	●	●	—	—	—	—	●	—
ASCOM/GE	patient station or wall	●	●	●	●	—	—	—	—	—	●
Dukane/GE	wall plate	●	●	●	●	—	—	—	—	●	—
Hill-Rom Composer	patient station	—	—	—	—	—	—	●	●	●	—
Hill-Rom Navicare	patient station	—	—	—	—	●	●	—	—	—	—
Critical Alert	wall plate	●	●	●	●	—	—	—	—	●	—
Jeron	wall plate	●	●	●	●	—	—	—	—	●	—
Rauland Responder 3, 4, 5	wall plate	●	●	●	●	—	—	—	—	●	—
Simplex Grinnell Ezcare	wall plate	●	●	●	●	—	—	—	—	●	—
West-Com	wall plate	●	●	●	●	—	—	—	—	●	—
Zettler Sentinal 500	wall plate	●	●	●	●	—	—	—	—	●	—

USING A BREAKAWAY CABLE IS EASY



[1] Plug the wall end of the cable into the wall plate and tighten the thumbscrews.



[2] Install the bracket to permanently mount the cable. Brackets are available for all types of wall plates and patient stations



[3] Plug the cable into the bed, tighten the thumbscrews, and screw the strain relief clamp into the bed to permanently mount the cable.



[4] Connect the breakaway cable's pinless connectors.



[5] When moving the bed, disconnect the cables and place the dummy plug into the wall end of the cable.



.....
QUESTIONS ABOUT BREAKAWAY CABLES? GIVE US A CALL.
.....

CURBELL
MEDICAL

www.curbellmedical.com • **1-800-235-7500**