

CURBELL
MEDICAL



MATTRESSES
FOR STRETCHERS AND HOSPITAL BEDS

A LONG HISTORY IN THE INDUSTRY

Curbell has been supplying hospitals and long-term care facilities with innovative products for over 50 years. We have strong relationships with bed, television, and nurse call system manufacturers, and we work closely with them to ensure that our products work properly and safely with all types of equipment. Most importantly, we work with you, to create custom solutions that meet your requirements and specifications.

OUR COMMITMENT TO QUALITY

Curbell works to continuously improve our operations, products, and services. Our quality management system complies with ISO 13485, and we are compliant with all government and industry regulations. We are also medical device listed, and are a current Good Manufacturing Practices (cGMP) Compliant Facility.



CONTENTS

We're regularly adding to our product line. If you don't see what you need, call Curbell at 1-800-235-7500.

Replacing Your Mattresses 1

Choosing A Mattress 2

Pressure Injuries 3

Cleaning Tips 4

Stretcher Mattresses And Covers 5

 Main Stretcher Mattress Features 6

 Standard Stretcher Mattresses 7

 Comfort Stretcher Mattresses 8

 Non-Powered Reactive Stretcher Mattresses 9

 Gynnie Birthing Stretcher Mattresses 10

Bed Mattresses And Covers 11

 Main Bed Mattress Features 12

 Standard Bed Mattresses 13

 Comfort Bed Mattresses 14

 Non-Powered Reactive Bed Mattresses 15

 Versacare Mattresses 16

REPLACING YOUR MATTRESSES

Your mattresses get a lot of use and abuse — especially stretcher mattresses that are moved from department to department many times each day. As mattresses get worn out, there may be holes and tears in the fabric that allow blood or other bodily fluids to enter the mattress.

Between 2011 and 2016, the FDA received over 700 reports of mattress covers failing to prevent these fluids from entering the mattress¹. Some reports indicated that “if blood and body fluids from one patient penetrate a mattress, they can later leak out from the mattress when another patient is placed on the bed.”

Aside from being a safety concern for both your patients and your staff by increasing avoidable infections (and their associated costs), a damaged mattress decreases overall patient confidence in their care. Following these simple tips from the FDA can help you make sure that your mattresses are in good condition and ready for patients.



DEVELOP AN INSPECTION PLAN

- ▶ Create an inspection plan for all mattresses in your facility.
- ▶ Check the expected life of the mattress and the mattress cover.
- ▶ Contact the bed mattress cover manufacturer for any additional questions.



INSPECT

- ▶ Regularly check each mattress cover for any visible signs of damage or wear.
- ▶ Routinely remove the mattress cover and check its inside surface for wet spots, staining, or signs of damage or wear.



REMOVE AND REPLACE

- ▶ Remove any damaged, worn, or visibly stained mattress according to your facility's procedures and the manufacturer's instructions.
- ▶ Immediately replace any mattress cover with visible signs of damage or wear to reduce the risk of infection to patients.



MAINTAIN

- ▶ Clean and disinfect undamaged medical bed mattress covers according to the manufacturer's guidelines.
- ▶ Do not use the mattress as a pin cushion for needles.

1. Center for Devices and Radiological Health. "Covers for Hospital Bed Mattresses: Learn How to Keep Them Safe." U.S. Food and Drug Administration. FDA, November 20, 2017. <https://www.fda.gov/MedicalDevices/ProductsandMedicalProcedures/GeneralHospitalDevicesandSupplies/HospitalBeds/ucm585737.htm>



CHOOSING A MATTRESS

On the surface, most mattresses look pretty much alike — most of them are just blue rectangles, after all. But what's inside (*and* out) can have a big impact on patient comfort, patient safety, and durability.

Comfort, safety, and durability, aren't independent of each other. A mattress that's so thin that the patient "bottoms out" onto the bed or stretcher is not just uncomfortable — it's also unsafe, as an unsupportive mattress could lead to pressure injuries. A mattress that lets fluids leak into its seams isn't just unsafe — it's also less durable, as those fluids can cause the foam to degrade. When choosing a mattress, keep all of these things in mind; and if you're having trouble figuring out what you need, contact your Curbell sales representative at 1-800-235-7500.



COMFORT | **SAFETY** | **DURABILITY**

FOAM TYPE AND THICKNESS

Boarding times for patients in the ED vary greatly, and some can be on stretchers for many hours¹ before they get moved to a room.

Consider what type of foam and thickness will be appropriate for your stretchers and beds to provide comfort and to minimize risk from pressure injuries.

Options include memory foam, which allows the patient to be immersed into the mattress reducing pressure to body regions that are susceptible to pressure injuries; and non-powered reactive mattresses that deliver dynamic response to patient movement.

FIT

Stretchers and beds may look the same size from one model to the next, but there can be several inches difference from one to the next. Make sure you get the right size for your stretcher or bed frame.

PATIENT WEIGHT LIMIT

Consider your patient population and make sure your mattresses can support their weight.

FLUID RESISTANCE

Fluids can make their way into mattresses via several routes, from the seams and zipper to tears and punctures

For maximum fluid resistance, look for seams that are welded, rather than sewn, as well as zippers that aren't completely exposed.

CLEANABILITY

Make sure your mattresses are able to withstand your hospital's cleaning protocol. A less expensive material might seem appealing from a budget standpoint, but the disinfectants your hospital uses may cut its life short.

For the best durability and resistance to bleach and peroxide, look for a mattress cover made of a polyester-coated knit with a polycarbonate additive.

TESTING

The mattresses that came with your beds and stretchers were tested to various standards, and the mattresses that replace them should, too.

The Support Surface Standards Initiative (S3I) was founded in 2001 to fill the need for performance and reporting standards. It develops uniform terminology, test methods, and reporting standards for support surfaces, and with the affiliation with ANSI/RESNA, it became the official standards body for the United States.

1. Davis, Jeffrey. "Emergency Department 'Boarding' at Seemingly All-Time High Levels." American College of Emergency Physicians, August 26, 2021. <https://www.acep.org/federal-advocacy/federal-advocacy-overview/regs--eggs/regs--eggs-articles/regs--eggs---august-26-2021>.

PRESSURE INJURIES

A pressure injury is localized damage to the skin and underlying soft tissue usually over a bony prominence or related to a medical or other device. The injury can present as intact skin or an open ulcer and may be painful. The injury occurs as a result of intense and/or prolonged pressure or pressure in combination with shear.

2,500,000

2.5 million patients per year develop a hospital-acquired pressure injury (HAPI)



Patients with hospital acquired pressure injuries (HAPI) have a median excess length of stay of 4.31 days

60,000

60,000 patients die every year as a direct result of pressure injuries



Patients with HAPIs have higher 30-day readmission rates (22.6% vs. 17.6%)

\$11,000,000,000

HAPIs are estimated to cost \$11 billion per year



HAPI rates are increasing while all other hospital acquired conditions are decreasing

Source: "NPIAP Fact Sheet." National Pressure Injury Advisory Panel, November 8, 2019. https://npiap.com/resource/resmgr/npiap_pru_awareness_fact_she.pdf

CURBELL CAN HELP

Our non-powered reactive mattresses offer both a high level of comfort, as well as additional protection against skin breakdown. Inside are a series of interconnected air cells that deliver dynamic response to patient movement without electricity or loud motors. See page 9 for stretcher mattresses and page 15 for bed mattresses.



CLEANING AND DISINFECTING

Wipe down mattresses with one of the disinfectant cleaners listed below. Curbell's mattress covers were tested with these cleaners, and none were found to cause fading or damage to the material. Visit the mattress section of www.curbellmedical.com for the most up-to-date list of compatible cleaners. If your disinfectant is not listed, please contact Curbell.

- ▶ 3M®: Quat Disinfectant Cleaner
- ▶ Advanced Sterilization Products: Cidex®
- ▶ Airkem: A456-N
- ▶ Caltech®: Dispatch®
- ▶ Clorox®: Healthcare Bleach Wipes*
- ▶ Cosco: Tincture of Green Soap
- ▶ Diversey: Oxivir® Tb
- ▶ Dutch® Plus Safety Cleaner
- ▶ Ecolab®: A-456-II Disinfectant Cleaner
- ▶ Isopropyl Rubbing Alcohol 70%
- ▶ METREX: Cavi-Wipes™
- ▶ METREX: Cavicide™
- ▶ Misco Products Corp. (MPC): Hi-Con PF3
- ▶ PDI®: Super Sani-Cloth® Plus
- ▶ Spartan®: SD-20
- ▶ Spartan: Hepacide Quat II
- ▶ Sporidicin®: Sterilization Solution
- ▶ Steris: Coverage Wipes Plus
- ▶ Stryker®: Sidekick Disinfecting Wipes
- ▶ Veridien: Viraguard® Wipes
- ▶ VIROX®: Accel
- ▶ VIROX: 256
- ▶ Wayne®: Concept 256N Disinfectant



Cleaning solutions that contain bleach or peroxide should only be used on polycarbonate mattress covers.

Although we do offer polyurethane mattresses, this material isn't resistant to bleach and peroxide. Polycarbonate is our standard material.



CLEANING TIPS

Mattress disinfection is an important part of any hospital's infection control program. But the harsh chemicals that are used can damage the mattress over time. Follow these tips to get the most out of your mattresses.

1

FOLLOW THE INSTRUCTIONS

Make sure you follow the instructions not just for whichever cleaning agent you're using, but for the mattress itself. Not all mattresses are compatible with all common disinfectants, and using the wrong one can damage the mattress over time.

3

WAIT OUT THE "DWELL TIME"

The instructions for the disinfectant may mention the "dwell time". This is the amount of time that a surface must remain wet to allow the chemical to be in contact with an organism in order to kill it. Make sure you let the disinfectant do its job before wiping it off.

2

DILUTE IF NECESSARY

Some disinfectants are intended to be diluted before use. Using them at full strength can shorten the life of the mattress.

4

RINSING IS A MUST

After the dwell time has been achieved, immediately rinse the surface with clean warm water.

STRETCHER MATTRESSES



CARE TEAM TIP

Individuals who access care through the Emergency Department require early intervention to identify risk for pressure injury prevention. The appropriate support surface is a primary component of any care plan. By selecting a support surface to immerse and envelop the individual's body, damage to the soft tissue is minimized.



CHOOSING THE RIGHT STRETCHER MATTRESS

	REGULAR STRETCHERS			OB/GYN
	STANDARD PAGE 7	COMFORT PAGE 8	NON-POWERED REACTIVE PAGE 9	GYNIE PAGE 10
You need a mattress that's resistant to bleach or peroxide	●	●	●	●
You are concerned about the potential for pressure sores			●	
Your patients are placed on the stretcher mattress for more than a couple of hours and subject to discomfort	●	●	●	
You need a mattress for a birthing stretcher				●
You need a mattress for a Stryker Big Wheel stretcher	●	●	●	

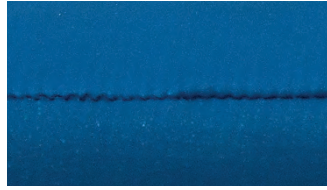
STRETCHER MATTRESS FEATURES

STANDARD FEATURES ON ALL MATTRESSES



WATERFALL ZIPPER FLAP

The waterfall zipper flap covers the zipper, so fluids pass over it without absorbing into the mattress.



RF WELDED SEAMS

Rather than a sewn seam, our seams are sealed using radio frequency welding to prevent fluid ingress. (Only available on polycarbonate material.)



PERFECT FIT

All our mattresses are accurately made to be a perfect fit on your stretchers.



BI-DIRECTIONAL STRETCH

Our breathable, two-way stretch fabric gives added comfort and durability, and also prevents “hammocking,” allowing for easier patient transfer.



POLYCARBONATE FABRIC

Our mattresses feature a durable anti-microbial polyester-coated knit with a polycarbonate additive. This material is resistant to bleach and peroxide.

Our standard mattress is also available in polyurethane material which is less expensive, but less durable and not resistant to bleach and peroxide.



THREE YEAR WARRANTY

We stand behind all our stretcher mattresses with a three year warranty.



FIRE SAFETY

All our foam meets Fed 1633 fire safety standards.



HOOK AND LOOP FASTENER

Each stretcher mattress comes with a six-foot strip of adhesive hook-and-loop faster so you can position at the best spot for your stretchers.



THOROUGH TESTING

All of our mattresses are tested by Support Surface Standards Initiative (S3I). Visit <https://npiap.com/page/S3I> for more information on this organization.



CLAMSHELL ZIPPER

A clamshell zipper that goes around three sides, making replacement of the cover easy.



MADE IN THE USA

All of our mattresses are manufactured in the USA.

UNIQUE FEATURES ON SOME MATTRESSES



SLOPED HEEL SECTION

Our non-powered reactive mattresses feature a sloped heel section to help provide pressure point comfort.



AIR CELLS

Our non-powered reactive mattresses contain a series of interconnected air cells that deliver dynamic response to patient movement without electricity or loud motors.



MEMORY FOAM

Memory foam allows the patient to be immersed into the mattress, which reduces pressure to body regions that are susceptible to pressure injuries.



PATIENT WEIGHT LIMIT

Depending on their construction, our mattresses provides support to patients of up to 300 to 500 pounds without the patient resting on the stretcher frame.

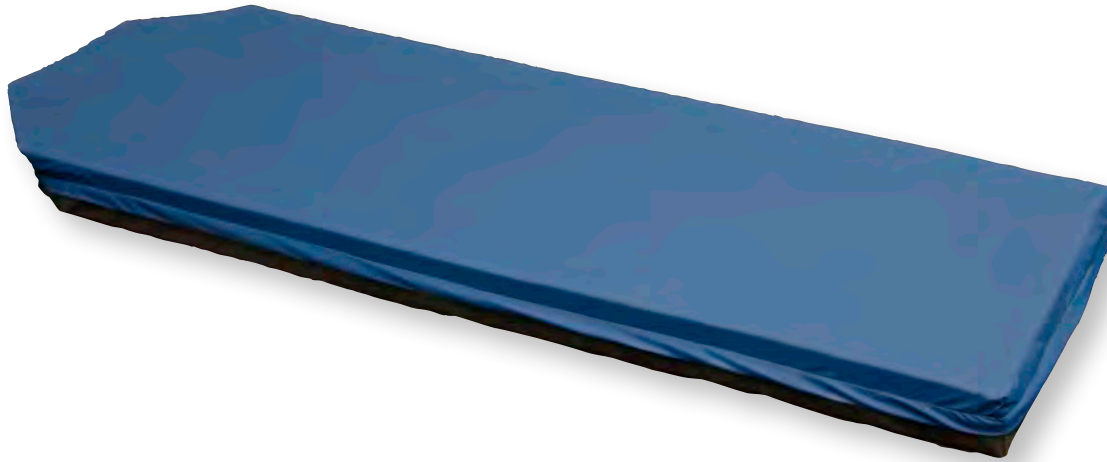




HIGH-TACK BOTTOM COVER

The bottom covers of our non-OB/GYN stretcher mattresses are made from a high-tack thermoplastic polyurethane which provides a strong grip to the stretcher surface.

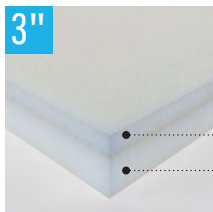
STANDARD FOAM

Curbell's standard stretcher mattresses are economical replacements that meet or exceed OEM specifications. They feature two layers of high density medical-grade foam, anti-microbial fabric, and are available in sizes that fit most stretcher frames.



-  WATERFALL ZIPPER FLAP
-  RF-WELDED SEAMS
-  PERFECT FIT
-  BI-DIRECTIONAL STRETCH
-  POLY-C FABRIC
-  HOOK-AND-LOOP FASTENER
-  CLAMSHELL ZIPPER
-  THREE YEAR WARRANTY
-  FED 1633 FIRE RATING
-  THOROUGH TESTING
-  MADE IN THE USA
-  HIGH-TACK BOTTOM COVER

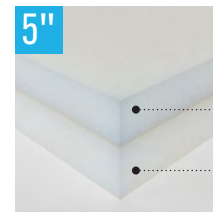
CONSTRUCTION









1" Conventional Foam
2" Conventional Foam



2" Conventional Foam
2" Conventional Foam



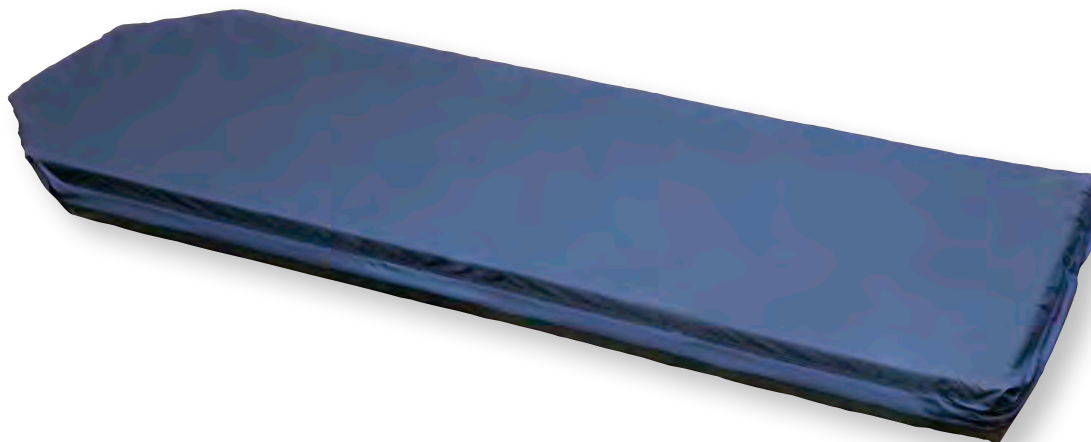
2" Conventional Foam
3" Conventional Foam

Width	Length	Thickness	Tapers	Patient Weight Limit	FULL MATTRESS	JUST THE COVER
					Part Number	Part Number
24"	76"	4"	2		27269	27286
		3"	2		27268	27285
26"	76"	4"	2		27270	27287
		5"	2		27276	27293
30"	76"	4"	2		27273	27290
		5"	2		27277	27295

These mattresses can be used on standard and big wheel stretchers. Polyurethane and four tapered corners are also available — call for pricing.

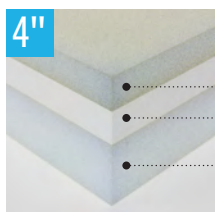
COMFORT FOAM

Our Comfort stretcher mattresses give your patients a much more comfortable surface while still providing all the features of our standard stretcher mattresses. They feature three layers of medical-grade foam with memory foam as the top layer, which helps reduce pressure in high-risk contact areas.

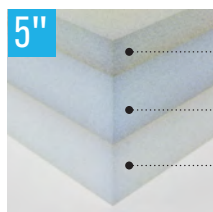


-  WATERFALL ZIPPER FLAP
-  RF-WELDED SEAMS
-  PERFECT FIT
-  BI-DIRECTIONAL STRETCH
-  POLY-C POLYCARBONATE FABRIC
-  HOOK-AND-LOOP FASTENER
-  CLAMSHELL ZIPPER
-  3 YEAR WARRANTY
-  FED 1633 FIRE RATING
-  THOROUGH TESTING
-  MADE IN THE USA
-  MEMORY FOAM
-  HIGH-TACK BOTTOM COVER





CONSTRUCTION



- 1" Memory Foam
- 1" High Resiliency Foam
- 2" Conventional Foam




- 1" Memory Foam
- 2" High Resiliency Foam
- 2" Conventional Foam

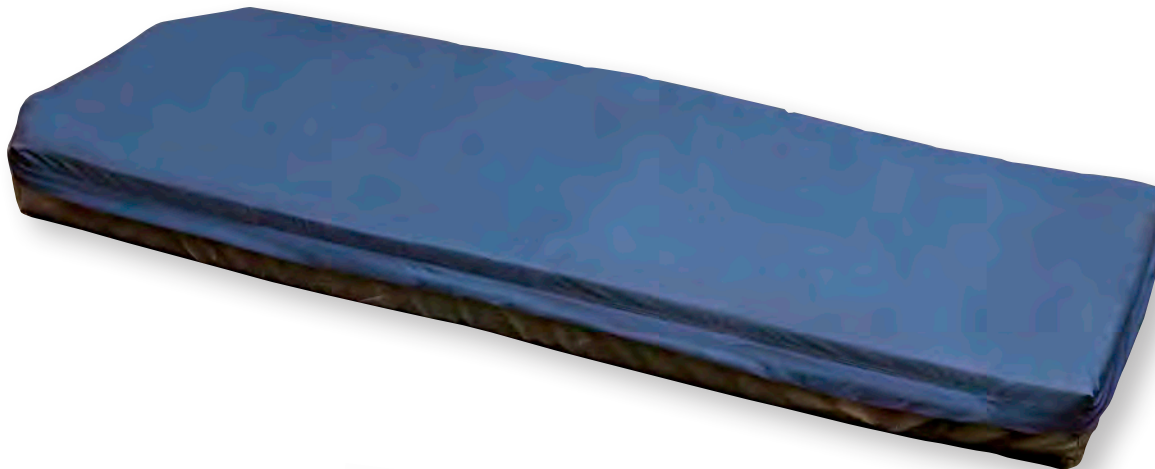
Width	Length	Thickness	Tapers	Patient Weight Limit	FULL MATTRESS	JUST THE COVER
					Part Number	Part Number
26"	76"	4"	2		27279	27287
		5"	2		27281	27293
30"	76"	4"	2		27280	27290
		5"	2		27282	27295

These mattresses can be used on standard and big wheel stretchers. Polyurethane and four tapered corners are also available — call for pricing.

NON-POWERED REACTIVE

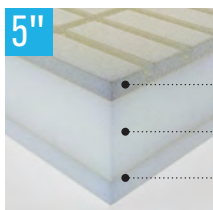
Our non-powered reactive mattresses offer a high level of comfort and additional protection against skin breakdown. Inside is a series of interconnected air cells that deliver dynamic response to patient movement without electricity or loud motors. A sloped heel section helps provide additional pressure point comfort.

-  WATERFALL ZIPPER FLAP
-  RF-WELDED SEAMS
-  PERFECT FIT
-  BI-DIRECTIONAL STRETCH
-  POLY-C POLYCARBONATE FABRIC
-  HOOK-AND-LOOP FASTENER
-  CLAMSHELL ZIPPER
-  3 YEAR WARRANTY
-  FED 1633 FIRE RATING
-  THOROUGH TESTING
-  MADE IN THE USA
-  MEMORY FOAM
-  HIGH-TACK BOTTOM COVER
-  INTERCONNECTED AIR CELLS
-  SLOPED HEEL SECTION





Two of the internal air cells

CONSTRUCTION



- 1" Memory Foam (sculpted cubes)
- 3" Foam (type depends on location)
- 1" Conventional Foam

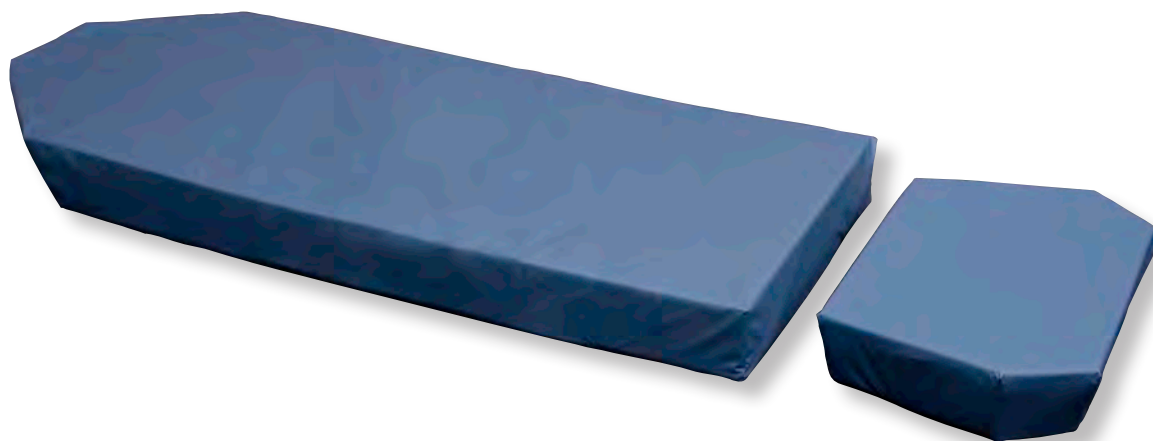
					FULL MATTRESS	JUST THE COVER
Width	Length	Thickness	Tapers	Patient Weight Limit	Part Number	Part Number
26"	76"	5"	2		27283	27294
30"	76"	5"	2		27284	27297

These mattresses can be used on standard and big wheel stretchers. Polyurethane and four tapered corners are also available — call for pricing.

STRETCHER MATTRESSES AND COVERS

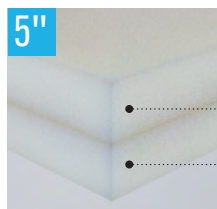
FOR GYNNIE® OB/GYN STRETCHERS

Our OB/GYN mattresses are direct replacements for Stryker's Gynnie stretchers, and include the correctly-placed snaps and sewn-in hook-and-loop fasteners to keep them in place. We offer the main and thigh pad sections separately so you can replace only what's needed.






-  WATERFALL ZIPPER FLAP
-  RF-WELDED SEAMS
-  PERFECT FIT
-  BI-DIRECTIONAL STRETCH
-  POLY-C POLYCARBONATE FABRIC
-  HOOK-AND-LOOP FASTENER
-  FED 1633 FIRE RATING
-  3 YEAR WARRANTY
-  THOROUGH TESTING
-  MADE IN THE USA
-  MEMORY FOAM

CONSTRUCTION



- 2.5" High Resiliency Foam
- 2.5" Conventional Foam

	Width	Length	Thickness	Patient Weight Limit	Part Number
Main Pad and Thigh Pad replacement set	26.5"	77"	5"		27266
Main Pad section replacement	26.5"	60.5"	5"		27265
Thigh Pad section replacement	26.5"	16.5"	5"		27267

BED MATTRESSES



CARE TEAM TIP

Implement a support surface with demonstrated performance as the foundation of your strategy to mitigate pressure injuries.



CHOOSING THE RIGHT BED MATTRESS

	STANDARD PAGE 13	COMFORT PAGE 14	NON-POWERED REACTIVE PAGE 15	VERSACARE PAGE 16
You need a mattress resistant to bleach or peroxide	●	●	●	●
You are concerned about the potential for pressure sores		●	●	●
You want a sloped heel section		●	●	●
You have Versacare beds				●

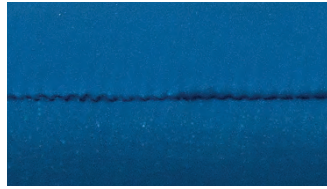
BED MATTRESS FEATURES

STANDARD FEATURES



WATERFALL ZIPPER FLAP

The waterfall zipper flap covers the zipper, so fluids pass over it without absorbing into the mattress.



RF WELDED SEAMS

Rather than a sewn seam, our seams are sealed using radio frequency welding to prevent fluid ingress. (Only available on polycarbonate material.)



PERFECT FIT

All our mattresses are accurately made to be a perfect fit on your beds.



BI-DIRECTIONAL STRETCH

Our breathable, two-way stretch fabric gives added comfort and durability, and also prevents “hammocking,” allowing for easier patient transfer.



POLYCARBONATE FABRIC

Our mattresses feature a durable anti-microbial polyester-coated knit with a polycarbonate additive. This material is resistant to bleach and peroxide.

Our standard mattress is also available in polyurethane material which is less expensive, but less durable and not resistant to bleach and peroxide.



FIRE SAFETY

All our foam meets Fed 1633 fire safety standards.



THOROUGH TESTING

All of our mattresses are tested by Support Surface Standards Initiative (S3I). Visit <https://npiap.com/page/S3I> for more information on this organization.



FIVE YEAR WARRANTY

We stand behind all our bed mattresses with a five year warranty.



MADE IN THE USA

All of our mattresses are manufactured in the USA.



CLAMSHELL ZIPPER

A clamshell zipper that goes around three sides, making replacement of the cover easy.

UNIQUE FEATURES ON SOME MATTRESSES



SLOPED HEEL SECTION

Our Comfort and Non-Powered Reactive mattresses feature a sloped heel section to help provide pressure point comfort.



AIR CELLS

Our Non-Powered Reactive mattresses contain a series of interconnected air cells that deliver dynamic response to patient movement without electricity or loud motors.



MEMORY FOAM

Memory foam allows the patient to be immersed into the mattress, which reduces pressure to body regions that are susceptible to pressure injuries.

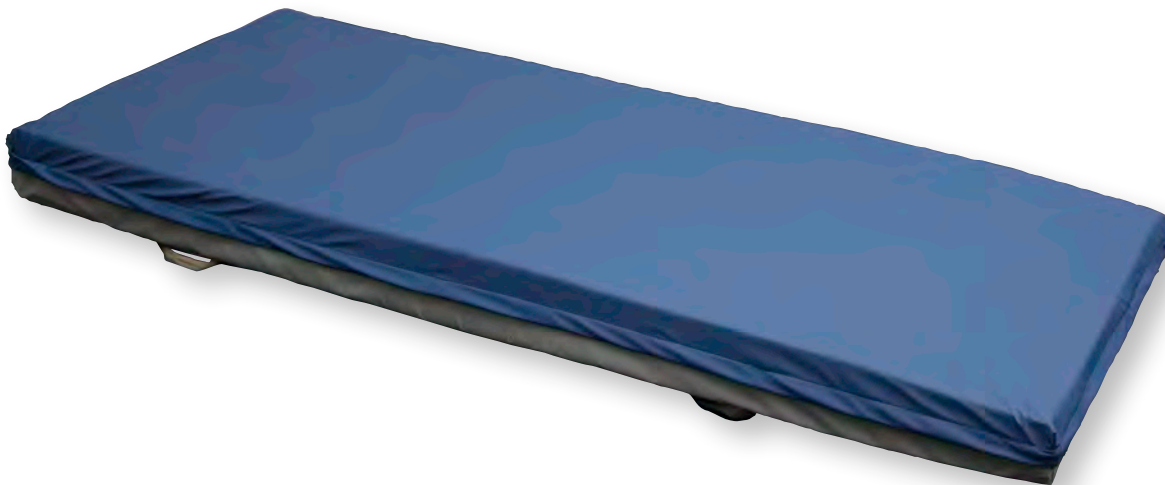


PATIENT WEIGHT LIMIT

Depending on their construction, our mattresses provides support to patients of up to 450 to 500 pounds without the patient resting on the bed frame.

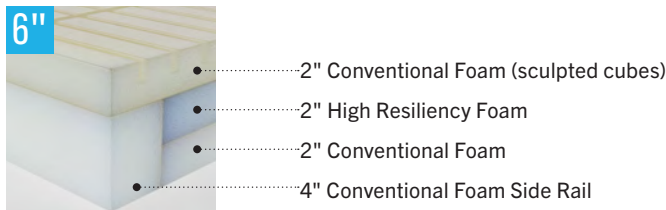
STANDARD FOAM





Our standard bed mattresses offer a high level of comfort at lower price than the OEM. They'll fit most standard beds and feature three layers of medical-grade foam. Firm foam sides give extra support when a patient is sitting on the edge of the bed, and the standard fire barrier meets CAL129/FED1633 fire rating.



-  WATERFALL ZIPPER FLAP
-  RF-WELDED SEAMS
-  PERFECT FIT
-  BI-DIRECTIONAL STRETCH
-  POLY-C POLYCARBONATE FABRIC
-  FED 1633 FIRE RATING
-  5 YEAR WARRANTY
-  CLAMSHELL ZIPPER
-  THOROUGH TESTING
-  MADE IN THE USA

CONSTRUCTION

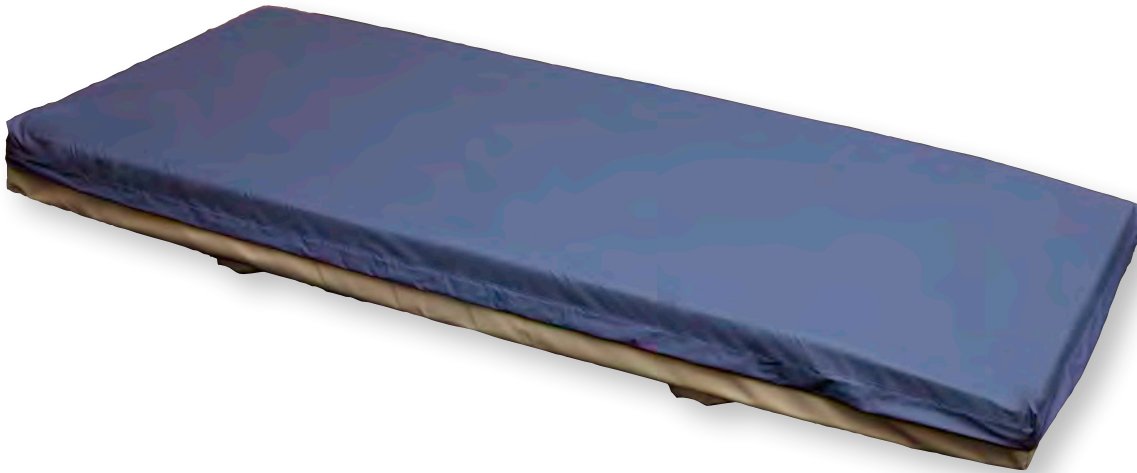


Width	Length	Thickness	Patient Weight Limit	FULL MATTRESS	JUST THE COVER
				Part Number	Part Number
35"	80"	6"		29039	29045
35"	84"	6"		29040	29046
36"	84"	6"		27243	27251
36"	84"	6"		27245	27254

Polyurethane is also available — call for pricing

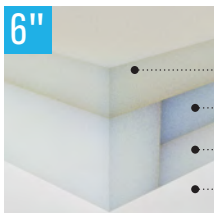
COMFORT FOAM

Our Comfort bed mattresses offer an additional level of comfort with memory foam on the top layer of the entire mattress. All layers are made of medical-grade foam, and firm foam sides give extra support when a patient is sitting on the edge of the bed. They also feature a sloped heel section to help provide pressure point comfort. The standard fire barrier meets CAL129/FED1633 fire rating.







-  WATERFALL ZIPPER FLAP
-  RF-WELDED SEAMS
-  PERFECT FIT
-  BI-DIRECTIONAL STRETCH
-  POLY-C CARBONATE FABRIC
-  FED 1633 FIRE RATING
-  5 YEAR WARRANTY
-  CLAMSHELL ZIPPER
-  THOROUGH TESTING
-  MADE IN THE USA
-  SLOPED HEEL SECTION
-  MEMORY FOAM

CONSTRUCTION



- 2" Memory Foam
- 2" High Resiliency Foam
- 2" Conventional Foam
- 4" Conventional Foam Side Rail

Width	Length	Thickness	Patient Weight Limit	FULL MATTRESS	JUST THE COVER
				Part Number	Part Number
35"	80"	6"		29006	29045
35"	84"	6"		29042	29046
36"	80"	6"		27247	27252
36"	84"	6"		27248	27256

NON-POWERED REACTIVE

Our non-powered reactive mattresses offer a high level of comfort and additional protection against skin breakdown. Inside is a series of interconnected air cells that deliver dynamic response to patient movement without electricity or loud motors. They feature memory foam on the top layer of the entire mattress.


A sloped heel section helps provide comfort to pressure points, and firm foam sides give extra support when a patient is sitting on the edge of the bed. The cover is polycarbonate and the interior comes standard with a fire barrier which gives them a fire rating of CAL129/FED1633.







Two of the internal air cells

-  WATERFALL ZIPPER FLAP
-  RF-WELDED SEAMS
-  PERFECT FIT
-  BI-DIRECTIONAL STRETCH
-  POLY-C POLYCARBONATE FABRIC
-  FED 1633 FIRE RATING
-  5 YEAR FIVE YEAR WARRANTY
-  CLAMSHELL ZIPPER
-  THOROUGH TESTING
-  MADE IN THE USA
-  MEMORY FOAM
-  INTERCONNECTED AIR CELLS
-  SLOPED HEEL SECTION

CONSTRUCTION

-  7.25"
 - 1" Memory Foam
 - 1" High Resiliency Foam
- 4.5" Foam (type depends on location) with internal air cells
- .75" Conventional Foam
- 5.25" Conventional Foam Side Rail

Width	Length	Thickness	Patient Weight Limit	FULL MATTRESS	JUST THE COVER
				Part Number	Part Number
35"	80"	7.25"		29043	29048
35"	84"	7.25"		29044	29049
36"	80"	7.25"		27249	27258
36"	84"	7.25"		27250	27259

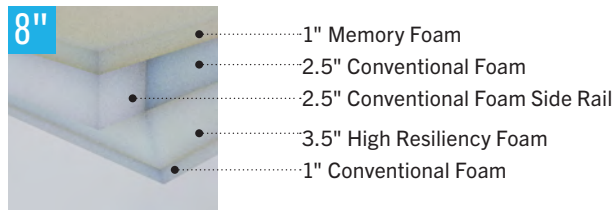
FOR VERSACARE® BEDS

Our mattresses and covers are a perfect fit for your Versacare beds. An expandable heel section allows them to compress when the bed is in chair mode.

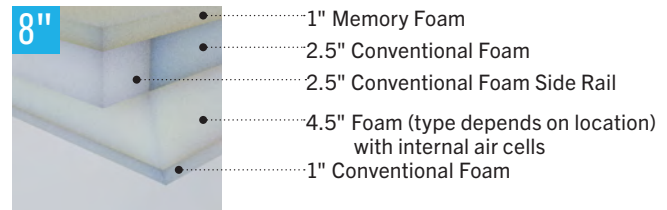




-  WATERFALL ZIPPER FLAP
-  RF-WELDED SEAMS
-  PERFECT FIT
-  BI-DIRECTIONAL STRETCH
-  POLY-C POLYCARBONATE FABRIC
-  FED 1633 FIRE RATING
-  5 YEAR WARRANTY
-  THOROUGH TESTING
-  MADE IN THE USA
-  CLAMSHELL ZIPPER

FOAM MATTRESS CONSTRUCTION



NON-POWERED REACTIVE MATTRESS CONSTRUCTION



Type	Width	Length	Thickness	Patient Weight Limit	FULL MATTRESS	JUST THE COVER
					Part Number	Part Number
Foam	36"	86"	8"		27264	27261
Non-Powered Reactive	36"	86"	8"		27263	27261

OTHER PRODUCT LINES

In hospital rooms around the world, patients are dealing with demands on their health, and staff members are dealing with demands on their time. Curbell Medical is at the center of it all, with product lines that have set the standard for hospital room integration. For more than 60 years, we've made sure that patients can expect the best possible experience. And our salespeople make sure that our customers can expect the same, bringing decades of experience to partnerships that are built for the long haul. Whether it's a visionary product or a tried-and-true relationship, there's integrity in everything we build.



NURSE CALL AND TV

- ▣ Pillow speakers
- ▣ Call cords
- ▣ Jumper cables



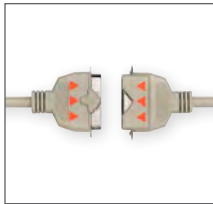
PATIENT MONITORING

- ▣ Reusable ECG cables and lead wires
- ▣ Disposable lead wires
- ▣ SPO2 probes and adaptors



FALL MANAGEMENT

- ▣ Chair and bed monitors
- ▣ Sensor pads
- ▣ Floor cushions and sensors



BED CABLES

- ▣ Bed communication cables
- ▣ Bed breakaway cables



INSTALLATION

- ▣ Receptacle kits
- ▣ Dummy plugs
- ▣ Wall plates



LIGHTING

- ▣ Low voltage controllers
- ▣ Low voltage controller wall plates



ORDERING AND WARRANTY INFORMATION

PLACING ORDERS

Orders may be subject to a minimum order requirement. Part numbers, product availability, and pricing are subject to change without notice.

VIA PHONE

Call Curbell toll-free anywhere in the US or Canada at 1-800-235-7500. Outside of the US, call 1-716-667-2520.

VIA FAX

Fax us at 716-667-7775

E-MAIL

We want to hear from you. Contact us with your comments and suggestions at info@curbellmedical.com

SELLER'S LIMITED WARRANTY

Unless otherwise stated in the limited warranty contained in literature that is shipped with the product (in which case the product literature limited warranty will in all respects apply), the Seller warrants the Buyer that the products will be free from defects in workmanship and materials under normal use for the length of time stated on the individual product pages.

PAYMENT TERMS

- ▣ Net 30 days terms are extended to established accounts
- ▣ Payment with order: send check or money order. Please call our toll-free number for the exact shipping charge
- ▣ COD: Pay the full amount including shipping upon receipt
- ▣ Visa, MasterCard, Discover, and American Express are gladly accepted
- ▣ Shipping and handling charges will be added to every order

HOW TO RETURN MERCHANDISE

All returns must be processed within 60 days of delivery date and are subject to a 25% restocking fee. Product must be in new, resalable condition, and in the original packaging. Custom-made items are non-returnable. Contact Customer Service at 1-800-235-7500 and ask for a return merchandise authorization number (RMA#). Enclose this RMA# with the item, print the RMA# on the outside of the package, and mail it to:

Curbell Medical Products, Inc.
20 Centre Drive
Orchard Park, NY 14127



Curbell Medical Products, Inc.
7 Cobham Drive
Orchard Park, NY 14127
1-800-235-7500 • Fax 716-667-7775
e-mail: info@curbellmedical.com



When it comes to their bed, patients deserve more than basic comfort. They deserve every modern convenience. This is why Curbell Medical is focused on providing the highest quality healthcare mattresses and mattress covers in the industry.

Thanks to a mix of technical expertise, proven quality, and a service philosophy built on partnership, Curbell helps both patients and customers rest easy.