

MATTRESS FOR HILL-ROM® I, II, III AFFINITY® BIRTHING BED

Curbell's mattresses are an economical replacement that can save you up to 50%. They feature high density foam and anti-microbial fabric. The models listed below are specially designed to fit Hill-Rom's Affinity Birthing Bed.

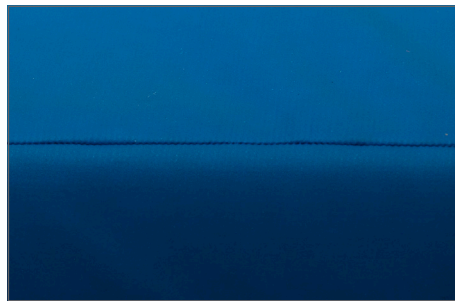
- ▣ Fabric features:
 - Blue, fade-resistant, polyurethane coated knit
 - Shear-resistant breathable bi-directional stretch
 - Hypo-allergenic
 - Anti-microbial
- ▣ 4" thick seat back section
- ▣ 3" thick foot section
- ▣ 100% high density anti-microbial medical-grade polyurethane foam
- ▣ Hook and loop placement and snap hardware are included
- ▣ Fully sealed to prevent fluid ingress
- ▣ Easy to clean, stain-resistant, and durable
- ▣ Cover and foam have added fire retardants (meets CAL 117)
- ▣ Five year warranty



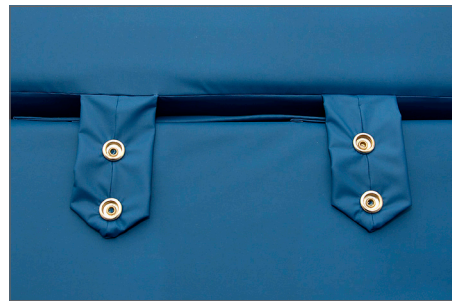
V Seat Back Section:
Part Number 14572



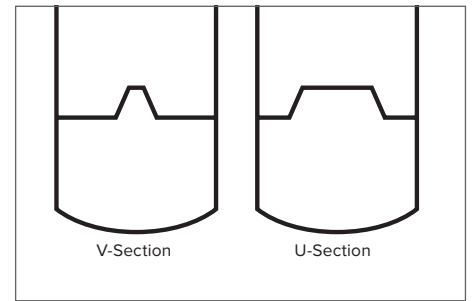
V Foot Section:
Part Number 14573



Fully sealed with waterproof welding to prevent fluid ingress



Attaches to stretcher deck with the included snaps



Available in V-Sectioned and U-Sectioned sets

PART NUMBER	DESCRIPTION	PRICE
14572	Hill-Rom Affinity, V, seat back section, 4" x 35" x 50"	\$365.35
14573	Hill-Rom Affinity, V, foot section, 3" x 34" x 31"	\$201.05
14611	Hill-Rom Affinity, V, full set (seat back and foot sections)	\$527.27
14574	Hill-Rom Affinity, U, seat back section, 4" x 35" x 50"	\$380.20
14575	Hill-Rom Affinity, U, foot section, 3" x 34" x 31"	\$186.72
14612	Hill-Rom Affinity, U, full set (seat back and foot sections)	\$542.09
17048	Hill-Rom Affinity I, II, and III, comfort pad and memory foam	\$291.73

Affinity is a registered trademark of Hill-Rom, Inc.

©2017 Curbell Medical Products, Inc. MAP1406C