

MATTRESS FOR HILL-ROM® I, II, III AFFINITY® BIRTHING BED

Curbell's mattresses are an economical replacement that can save you up to 50%. They feature high density foam and anti-microbial fabric. The models listed below are specially designed to fit Hill-Rom's Affinity Birthing Bed.

▣ Fabric features:

- Blue, fade-resistant, polyurethane coated knit
- Shear-resistant breathable bi-directional stretch
- Hypo-allergenic
- Anti-microbial

▣ 4" thick seat back section

▣ 3" thick foot section

▣ 100% high density anti-microbial medical-grade polyurethane foam

▣ Hook and loop placement and snap hardware are included

▣ Fully sealed to prevent fluid ingress

▣ Easy to clean, stain-resistant, and durable

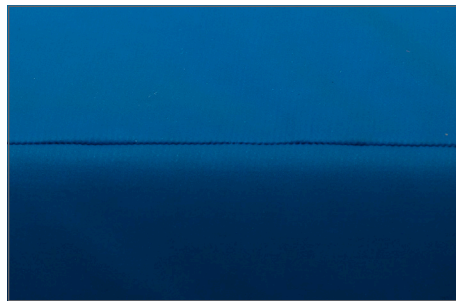
▣ Cover and foam have added fire retardants (meets CAL 117)

▣ Five year warranty

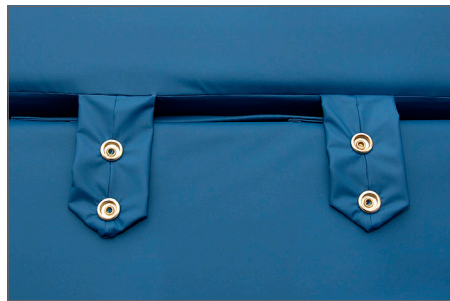


V Seat Back Section:
Part Number 14572

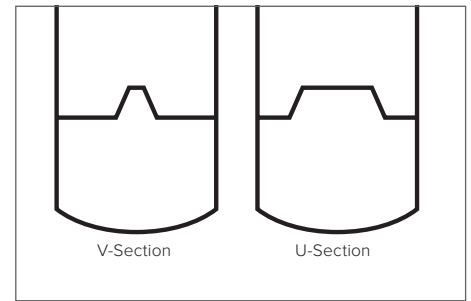
V Foot Section:
Part Number 14573



Fully sealed with waterproof welding to prevent fluid ingress



Attaches to stretcher deck with the included snaps



Available in V-Sectioned and U-Sectioned sets

PART NUMBER	DESCRIPTION	PRICE
14572	Hill-Rom Affinity, V, seat back section, 4" x 35" x 50"	\$365.35
14573	Hill-Rom Affinity, V, foot section, 3" x 34" x 31"	\$201.05
14611	Hill-Rom Affinity, V, full set (seat back and foot sections)	\$527.27
14574	Hill-Rom Affinity, U, seat back section, 4" x 35" x 50"	\$380.20
14575	Hill-Rom Affinity, U, foot section, 3" x 34" x 31"	\$186.72
14612	Hill-Rom Affinity, U, full set (seat back and foot sections)	\$542.09