

# Replacement Mattress Covers

## For Dynamic Air®, TotalCare®, TotalCare SpO<sub>2</sub>RT®, VersaCare®, and ZoneAire®, and other Mattresses

Avoid the extra cost of replacing the complete mattress if the air bladders and foam of the original mattress are still acceptable — simply replace the worn-out cover with a new mattress cover from Curbell.

Our mattress covers feature fluid-proof, waterproof welded seams on the bottom cover, anti-microbial protection, and a waterfall flap over the zipper to keep just about anything from ruining your mattresses.

- ▶ Constructed of billowy, shear-resistant urethane or nylon
  - ▶ Urethane: The more popular choice
    - Blue, fade-resistant, polyurethane coated knit
    - Breathable, bi-directional stretch fabric
    - Two piece design with full perimeter zipper for easier and faster replacement (can reduce replacement time by 50% or more), and easy maintenance (cleaning, changing bladders and hoses)
    - Fully sealed cover prevents fluid ingress
  - ▶ Nylon: A less expensive alternative
    - One piece clamshell design with a zipper across three sides
- ▶ Bottom Cover:
  - Tri-laminate vinyl provides extra durable surface to withstand wear against bed frame
  - Fluid resistant
  - Specially vented to prevent moisture buildup
  - Tubes connect to the bed's pressure relief system
- ▶ Hypo-allergenic
- ▶ Anti-microbial properties combat mildew and fungus
- ▶ Easy to clean, stain-resistant, and durable
- ▶ Standard 6" Height
- ▶ Magnetic pockets for securing to the bed frame (except VersaCare)
- ▶ Added fire retardants (meets CAL 117 Fire Rating)
- ▶ Five year warranty
- ▶ Also available:
  - Kits
  - Fire barrier (meets CAL 129/FED 1633)
  - Bladders for air mattresses (includes plastic hose connections)
  - Foam Toppers and Bottoms
  - Moisture/Vapor Barriers



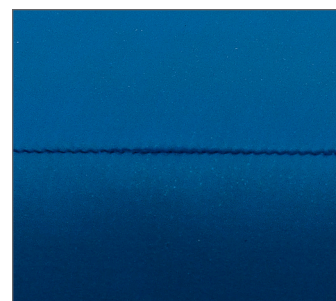
Our mattress covers are sized specifically to fit all current Hill-Rom® mattresses, as well as older models, and mattresses by other manufacturers.



Surgical grade polyurethane film is used as a moisture vapor barrier sheet between the foam core and the top cover.



The topper is made of 100% high density polyurethane foam, and features different firmness levels for the body and feet.



Fully sealed with waterproof welding to prevent fluid ingress.

